

# Hennepin County & Minneapolis- Partners in Development



Lambda Alpha  
Land Economics Weekend  
5.14.2010  
Presented by:  
Chuck Ballentine

# Hennepin County

- Seven-member Board of Commissioners,
- Each represents a district with more than 160,000 residents.
- Approximately 6,870 full-time employees.
- \$1.7-billion 2009 budget.
- About 44 percent of the budget goes for health and human services. The state's largest provider of care to indigent and vulnerable populations.
- One-third of the annual budget-property taxes. The rest: federal and state dollars, fees for services and licenses, and other sources.
- Largest of Minnesota's 87 counties in population, budget and estimated property value.
- 611 square miles.
- 1.2 million residents – 22 percent of Minnesota population; 41 percent of the metropolitan population. About one-third live in Minneapolis, the county seat.
- Median household income: \$60,962
- Median age: 38
- Ninety-two percent of residents 25+ are high school graduates – one of the highest rates in the nation. Forty-three percent have a bachelor's degree or higher

# Hennepin County Highlights

Triple-A credit rating from all three rating agencies. The county has maintained this rating since 1977.

Hennepin County Medical Center one of America's best hospitals by US News and World Report: 440,000 patients a year; 106,000 emergency cases and 52,000 ambulance runs a year.

Hennepin County Library-one of the top libraries in the United States. The 41-library system offers more than 5 million books, CDs, DVDs and other items in more than 40 languages, and has 1,750 public computers.

Hennepin responds to more than 15,000 child abuse calls a year; collects more than \$112 million a year for child support for more than 73,000 children; and provides social services to nearly one in four county residents.

Hennepin-leader in environmental protection and has committed to an 80-percent reduction of greenhouse gas emissions from county operations by 2050.

# Hennepin Highlights Continued

One of the top recycling rates in the nation. Some 45 percent of county residential and commercial waste is recycled or composted.

Sheriff's Office serves all cities in the county. Its dispatch center answers 9-1-1 calls for 36 of the 47 cities – 234,634 calls in 2008

Hennepin operates the largest local corrections system in the state – 37,000 adult and juvenile offenders under supervision (on probation or in correctional facilities).

Hennepin maintains 2,013 lane miles of roadways and 141 bridges.

Hennepin Taxpayer Services- 7 service centers (licenses, passports, etc.), conducted more than 1 million transactions last year, and oversees elections for approximately 856,000 registered voters.

The Hennepin County Public Records Office manages a library of more than 13 million documents and 184,000 certificates of title, with approximately 240,000 documents recorded in 2008.

# Hennepin As a Minneapolis Development Partner

- Hennepin Energy Recovery Company
- Library Merger
- Community Works and Bonding-Midtown Exchange
- Transit Development- trails as an interim use, Midtown Greenway
- Hiawatha LRT
- Northstar Commuter Rail
- Transportation Interchange
- The Ballpark



# “BUILDING AN URBAN BALLPARK” Minnesota Twins - Target Field

M I N N E A P O L I S  
m i n n e s o t a



# **“BUILDING AN URBAN BALLPARK”**

## **Minnesota Twins - Target Field**

**M I N N E A P O L I S**  
m i n n e s o t a



**PROJECT OWNERS:** Minnesota Twins, Minnesota Ballpark Authority, Hennepin County

**PROJECT TEAM:** Populous (formerly HOK Sport), HGA Architects & Engineers, Mortenson Construction w/Thor Const., American Engineering Testing, Braun Intertec, Sub-contractors/Suppliers





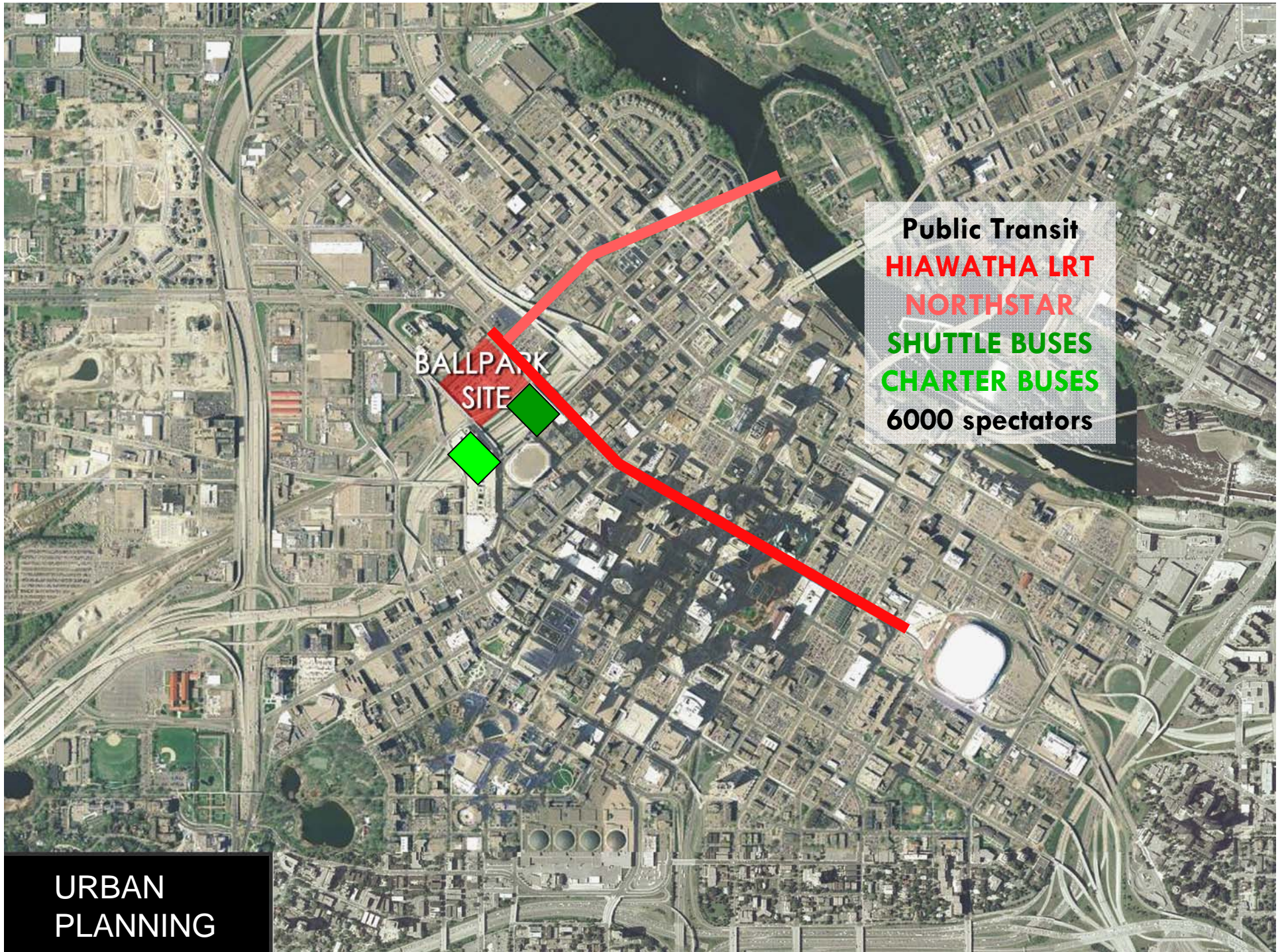




URBAN  
PLANNING

Ballpark Animation





BALLPARK  
SITE

Public Transit  
**HIAWATHA LRT**  
**NORTHSTAR**  
**SHUTTLE BUSES**  
**CHARTER BUSES**  
6000 spectators

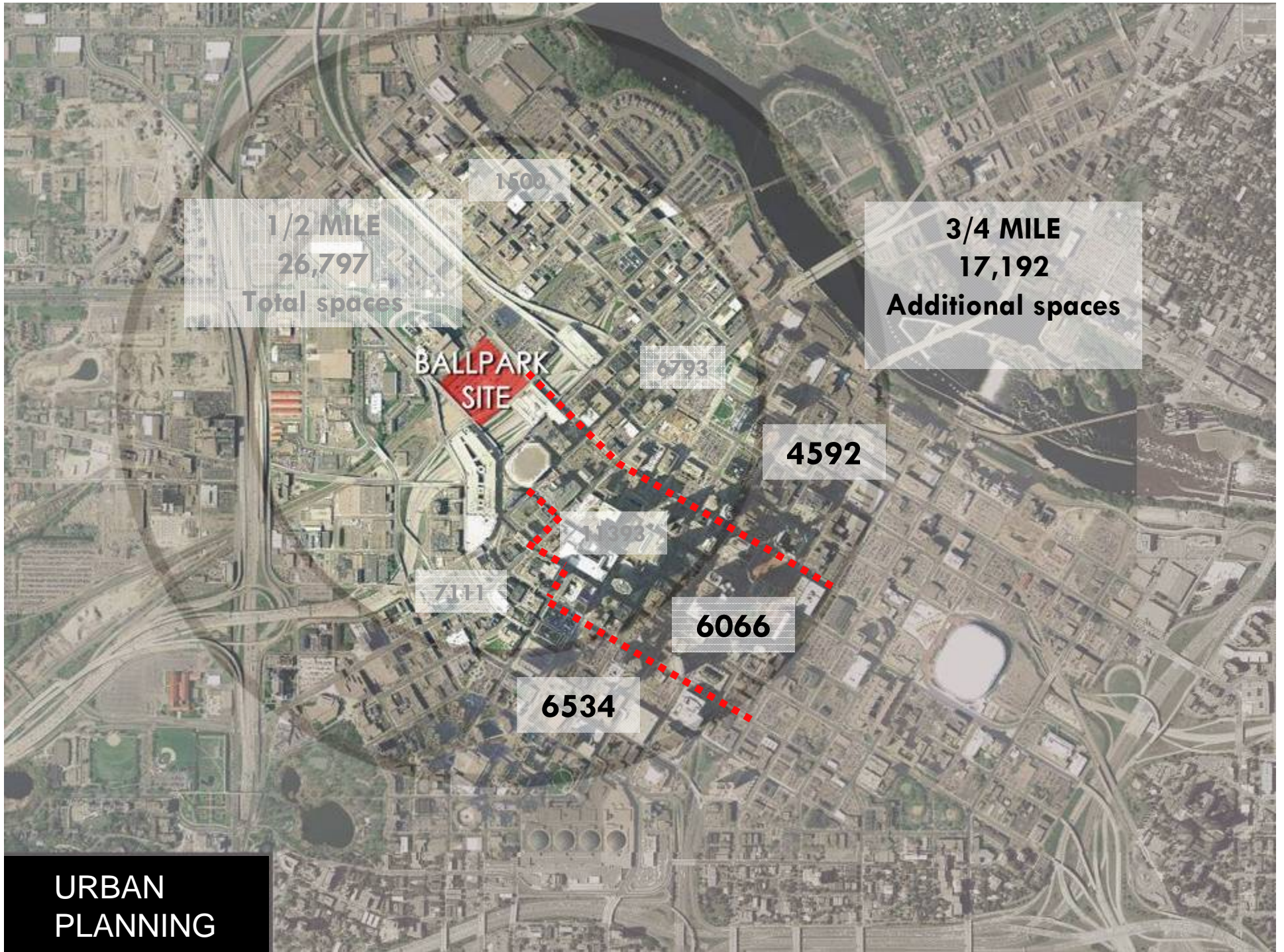
URBAN  
PLANNING





URBAN  
PLANNING





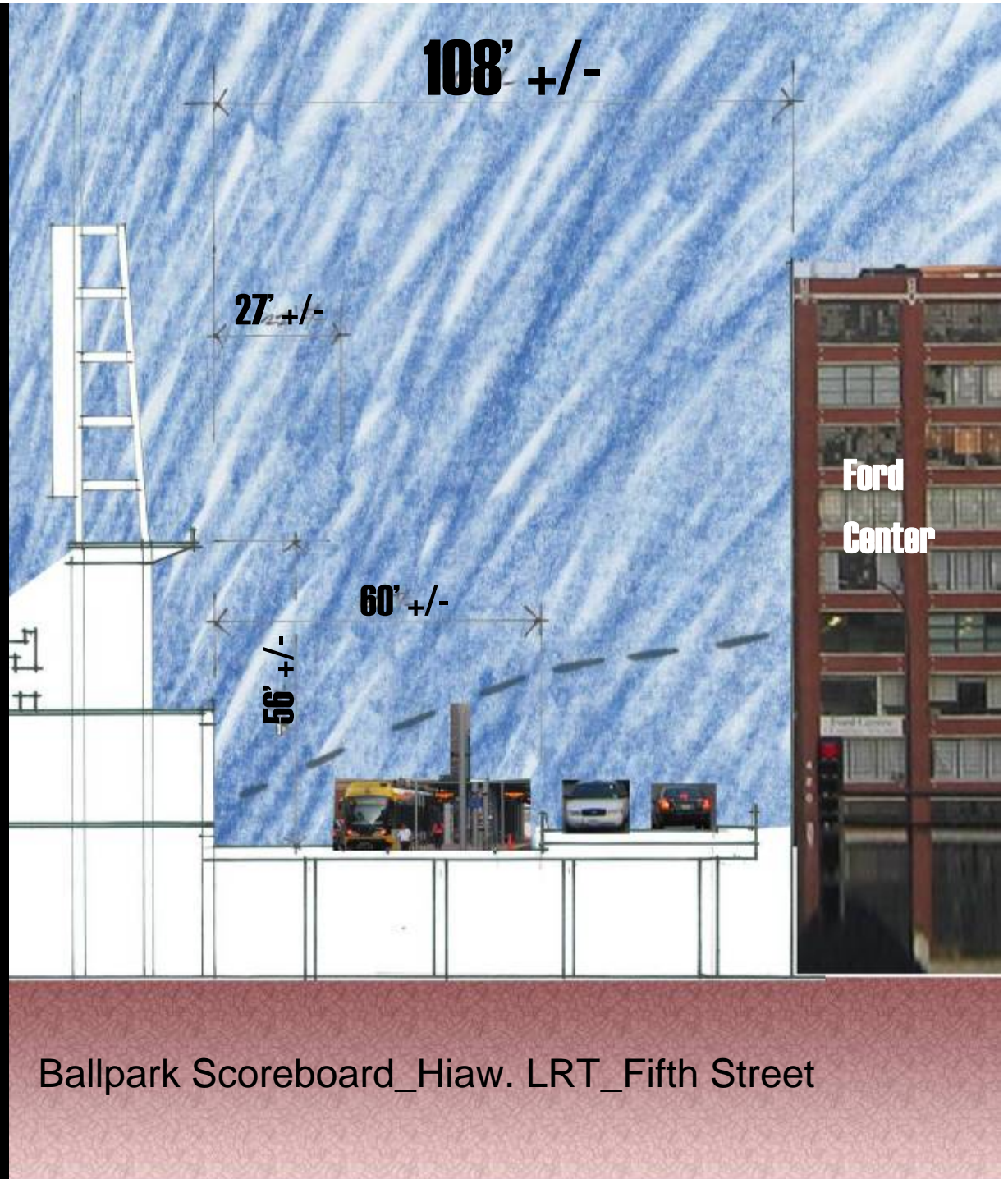




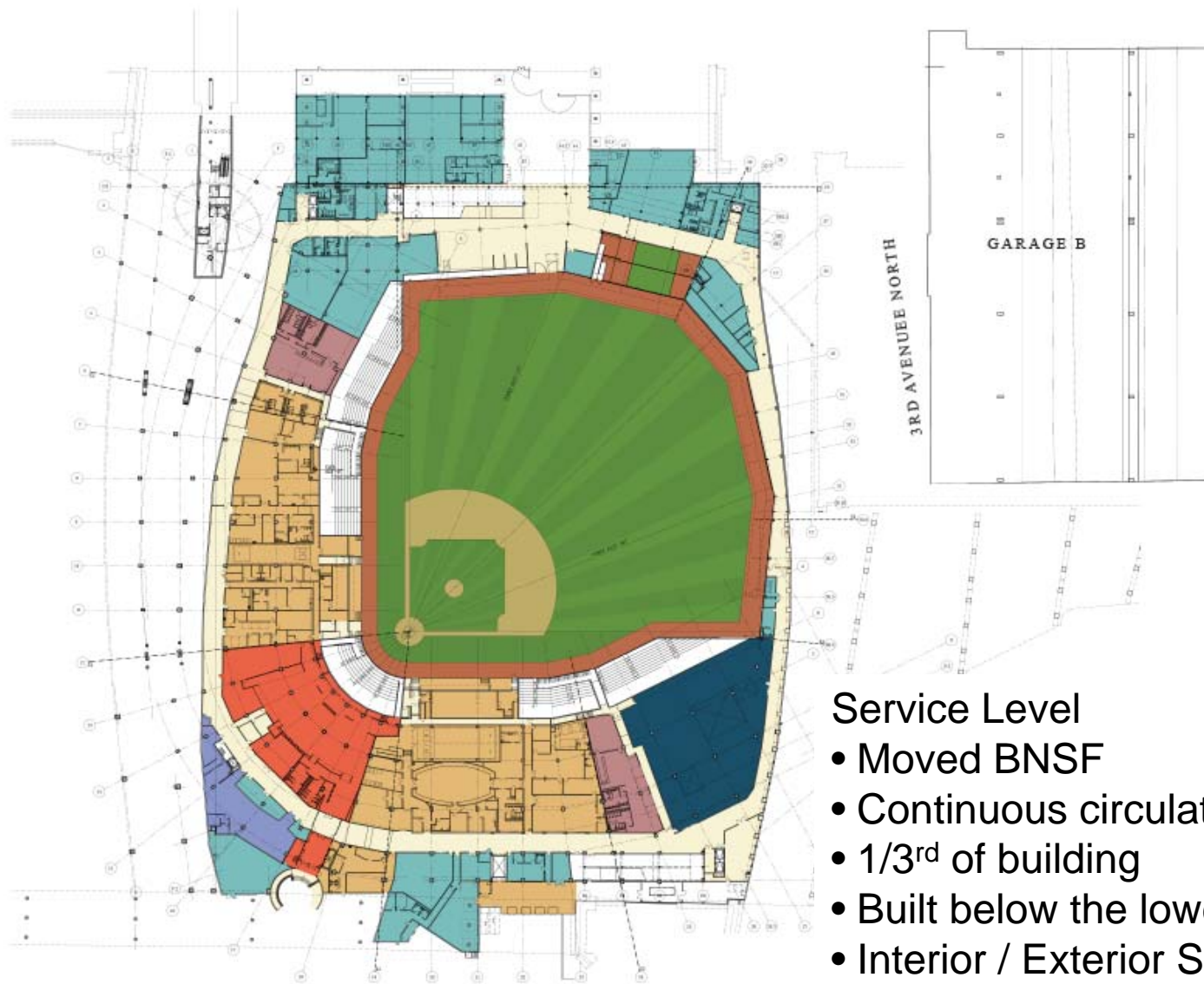
URBAN  
PLANNING



URBAN  
PLANNING







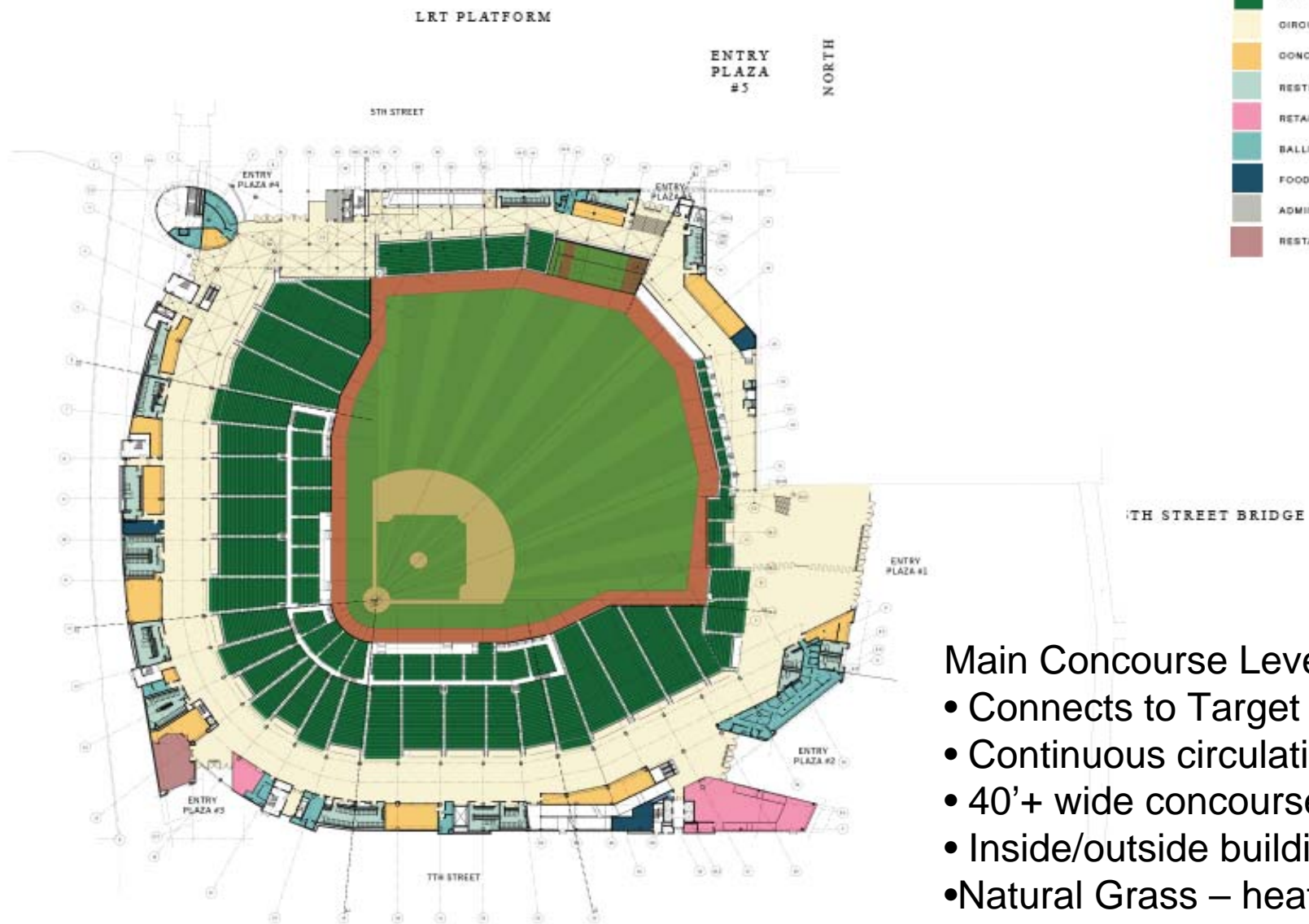
# KEY

|  |                            |
|--|----------------------------|
|  | TEAM FACILITIES            |
|  | FIELD CLUB LOUNGES         |
|  | BALLPARK OPERATIONS        |
|  | FOOD SERVICE OPERATIONS    |
|  | LOADING                    |
|  | CIRCULATION                |
|  | PRESS                      |
|  | CHAMPIONS CLUB/ENTRY LOBBY |

## Service Level

- Moved BNSF
- Continuous circulation
- 1/3<sup>rd</sup> of building
- Built below the lower seating bowl
- Interior / Exterior Space (elephant doors)
- At grade with I394 3<sup>rd</sup> Ave. entrance

ARCHITECTURE

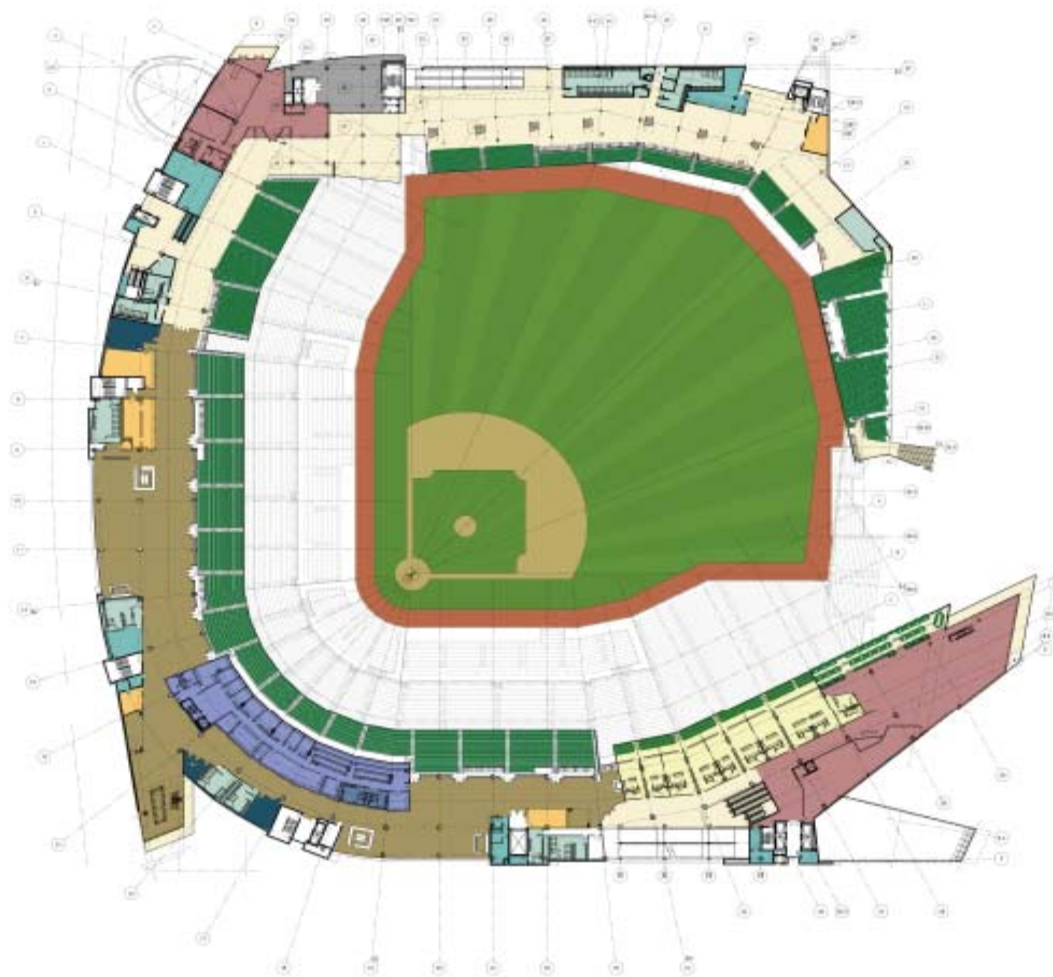


| KEY   |                         |
|---|-------------------------|
| <span style="display:inline-block; width:15px; height:15px; background-color:green;"></span>      | SEATS                   |
| <span style="display:inline-block; width:15px; height:15px; background-color:yellow;"></span>     | CIRCULATION             |
| <span style="display:inline-block; width:15px; height:15px; background-color:orange;"></span>     | CONCESSIONS             |
| <span style="display:inline-block; width:15px; height:15px; background-color:lightgreen;"></span> | RESTROOMS               |
| <span style="display:inline-block; width:15px; height:15px; background-color:pink;"></span>       | RETAIL                  |
| <span style="display:inline-block; width:15px; height:15px; background-color:teal;"></span>       | BALLPARK OPERATIONS     |
| <span style="display:inline-block; width:15px; height:15px; background-color:darkblue;"></span>   | FOOD SERVICE OPERATIONS |
| <span style="display:inline-block; width:15px; height:15px; background-color:grey;"></span>       | ADMINISTRATIVE OFFICES  |
| <span style="display:inline-block; width:15px; height:15px; background-color:brown;"></span>      | RESTAURANT              |

## Main Concourse Level

- Connects to Target Center
- Continuous circulation
- 40'+ wide concourse
- Inside/outside building
- Natural Grass – heated
- Concessions

ARCHITECTURE








# KEY

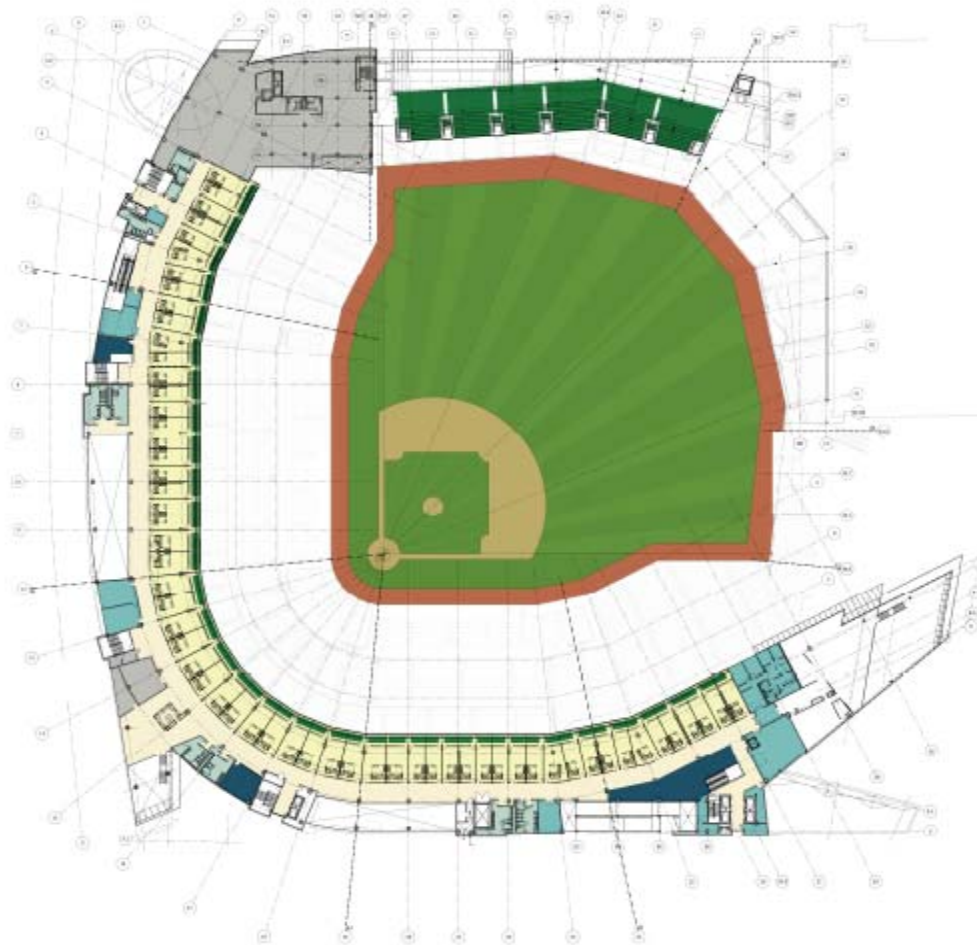
|                         |
|-------------------------|
| SEATS                   |
| EVENT SUITES            |
| PRESS                   |
| CONCESSIONS             |
| RESTROOMS               |
| ADMINISTRATIVE OFFICES  |
| CLUB/RESTAURANTS        |
| CIRCULATION             |
| FOOD SERVICE OPERATIONS |
| BALLPARK OPERATIONS     |
| LEGENDS CLUB            |

- Club Level
- Metropolitan Club
  - Press Box
  - Legends Clubs



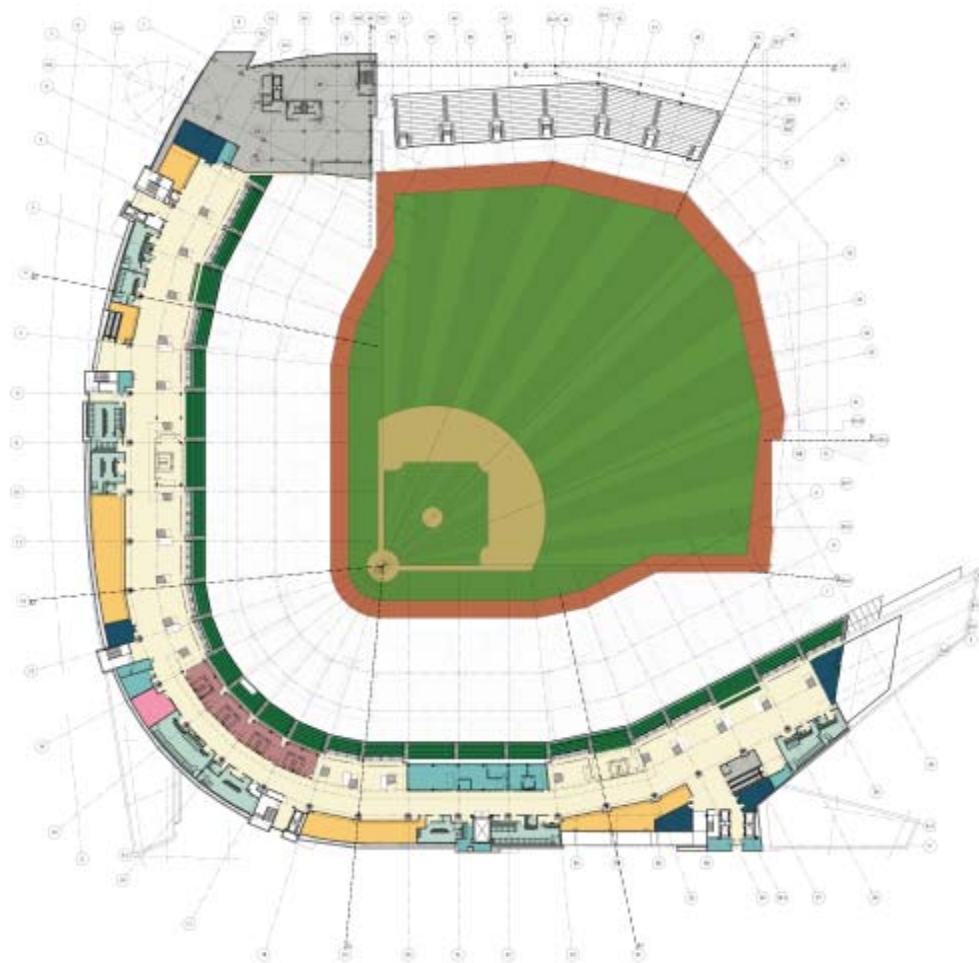
# KEY

|   |                         |
|---|-------------------------|
|  | SUITES                  |
|  | CIRCULATION             |
|  | RESTROOMS               |
|  | ADMINISTRATIVE OFFICES  |
|  | FOOD SERVICE OPERATIONS |
|  | BALLPARK OPERATION      |



- Suite Level
- 54 Suites
  - MBA Offices
  - Twin's Offices

ARCHITECTURE



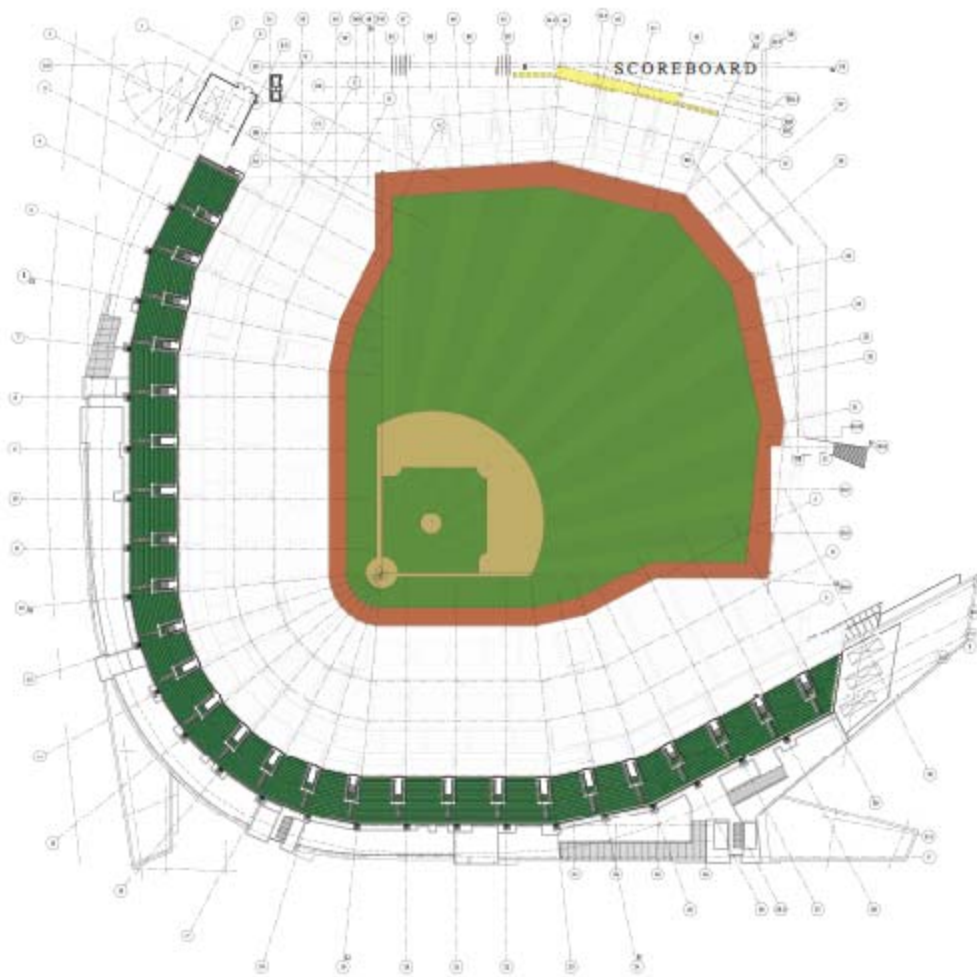
# KEY

|                         |  |
|-------------------------|--|
| CIRCULATION             |  |
| CONCESSIONS             |  |
| RESTROOMS               |  |
| INDOOR LOUNGE           |  |
| SEATS                   |  |
| RETAIL                  |  |
| ADMINISTRATIVE OFFICES  |  |
| BALLPARK OPERATIONS     |  |
| FOOD SERVICE OPERATIONS |  |

## Terrace Level

- Scoreboard Control
- Terrace Bars
- Budweiser Roof Deck
- Twin's Offices
- Concessions

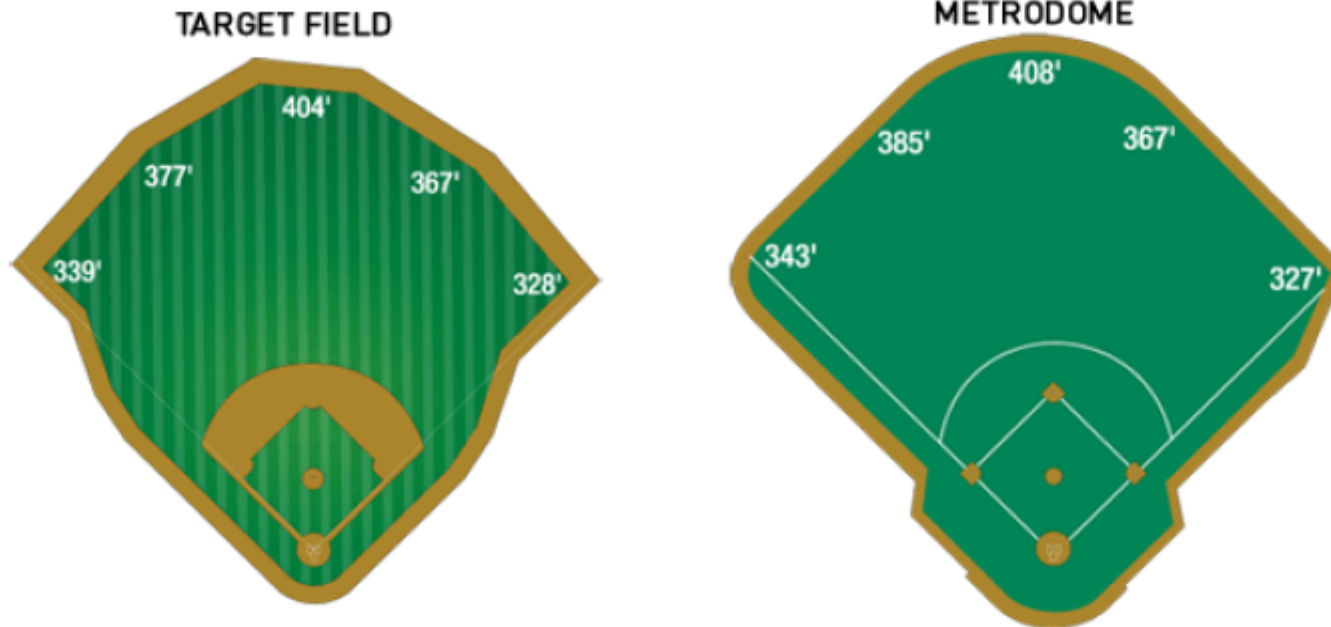
KEY



- View Deck
- Seating
  - Canopy Soffit



## METRODOME VS. TARGET FIELD FIELD DIMENSIONS



|                         | METRODOME        | TARGET FIELD     |
|-------------------------|------------------|------------------|
| Approximate capacity    | 55,300           | 40,000           |
| Seating in Lower Level  | 22,289           | 19,000           |
| Seating in Upper Level  | 32,445           | 13,000           |
| Seating in Club Level   | N/A              | 7,000            |
| Suites                  | 95               | 60               |
| Concourse Width (main)  | 22 feet          | 40 feet          |
| Concourse Width (upper) | 22 feet          | 26—44 feet       |
| Restrooms               | 256 (w), 192 (m) | 401 (w), 266 (m) |



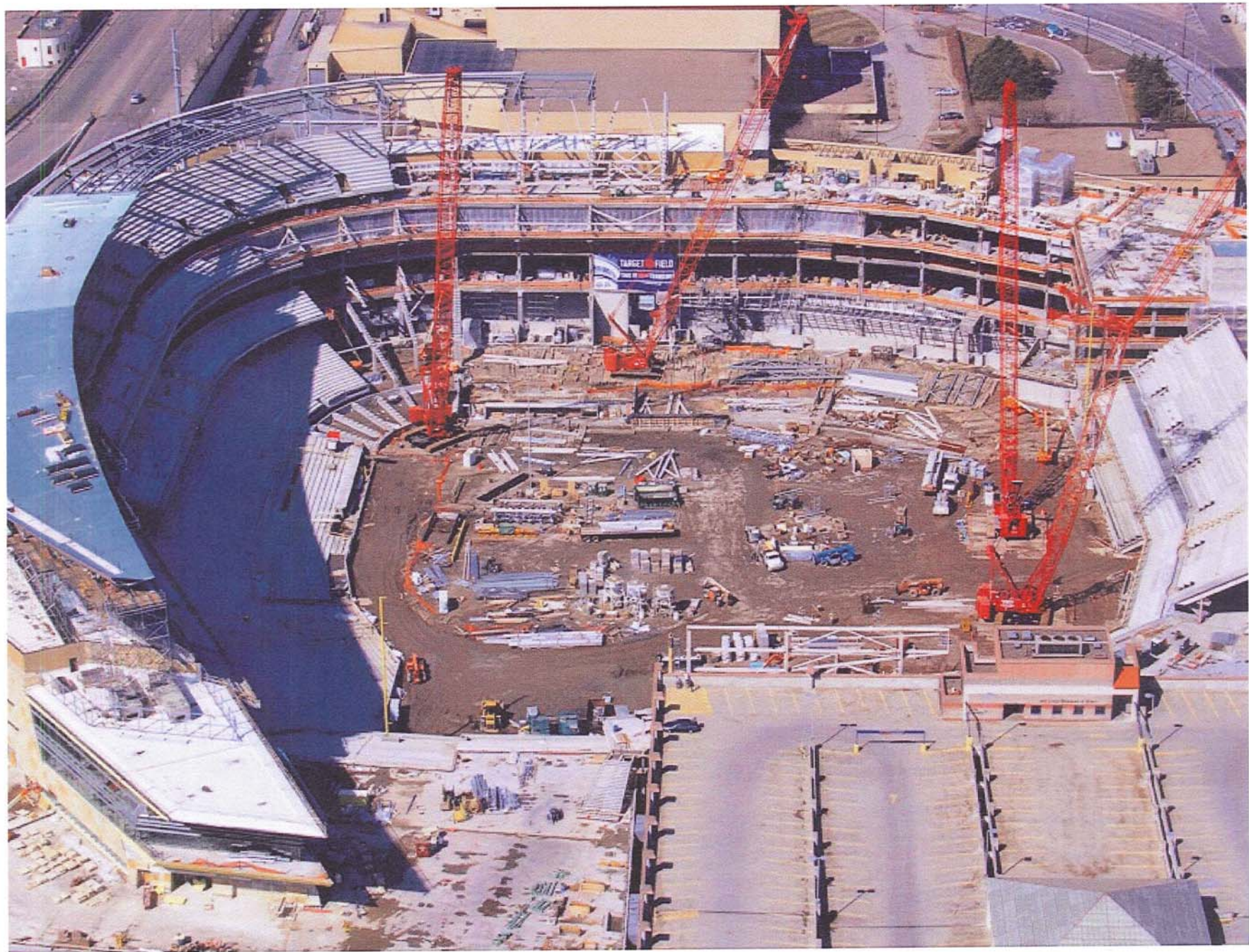
# ARCHITECTURE













# Material Statistics

- 3,400 Steel Pipe Piles (61 miles)
- 55,000 CY of Cast-in-Place Concrete
- 4,900 tons of Structural Steel
- 82,000 lineal feet of Precast Stadia
- 500,000 Unit Masonry Blocks
- 40,000 Seat Capacity
- 36,000 Ft. Field Heat Tubing (6.8 miles)
- 1.863M Ft. of A/V, Broadcast, CAT6A, Fiber Optic – 30,000 connections

# LEED Basics

- Registered Under LEED for New Construction version 2.2
- No Specific Criteria for Sports Facilities
- Attempted 35 of 69 credits
- Received Silver Status (33 credits)
- Only 1 other MLB LEED building



# Sustainable Site

- PR1 Construction Activity Pollution Prevention
- Site Selection
- Development Density & Community Connection
- Stormwater Management: Quality Control – water treatmenty system allows reuse for irrigation and washdown
- Public Transportation Access
  - Cedar Lake Bike Trail
  - Northstar Commuter Rail
  - Metro Transit Light Rail
  - Ramp B Bus Station
  - Super Bus







# Transportation Alternatives

| <i>Mode</i>                           | <i>Monday 4/12/2010</i> | <i>Wednesday 4/14/2010</i> | <i>Thursday 4/15/2010</i> | <i>Tuesday 4/20/2010</i> |
|---------------------------------------|-------------------------|----------------------------|---------------------------|--------------------------|
| <i>Hiawatha</i>                       | 5500                    | 5918                       | 5465                      | 4796                     |
| <i>NorthStar</i>                      | 501                     | 1667                       | 2165                      | NA                       |
| <i>679 Bus</i>                        | 700                     | 684                        | 774                       | 770                      |
| <i>Bikes</i>                          | 367                     | 370                        | NA                        | 352                      |
| <i>Total</i>                          | 7068                    | 8639                       | 8404                      | 5918                     |
| <i>Ballpark Capacity</i>              | 39504                   | 39504                      | 39504                     | 39504                    |
| <b>% Capacity by Alternative Mode</b> | 18%                     | 22%                        | 21%                       | 15%                      |



# Transportation Interchange:

Connects the following local and regional transportation elements:

- LRT
- Commuter Rail
- Passenger Rail
- Buses
- Pedestrians
- Bikes/Trails
- Cabs and vehicular drop-offs / pick-ups
- Skyways?







# The Interchange: Technical Considerations

- Additional LRT Platform and public queuing/pedestrian circulation space
- Provide an LRT Storage Track to support downtown civic events
- Separate LRT and 300 trucks daily at HERC entrance
- Pedestrian access from the North Loop to the ballpark/downtown side of 5<sup>th</sup> Street w/o crossing LRT tracks and “Paid Fare” zone
- Support future connections to Southwest and Bottineau LRT alignments
- Create a vibrant year round civic space
- Promote future development
- “Soften” the HERC facility from the adjacent neighborhoods